

Addressees

- Students with disabilities who have a recognized degree of disability equal to or above 33 percent.
- Students who present health situations (chronic illnesses, diagnostic processes, hospitalization periods) that, due to their limitations, require specific support measures to follow their studies.

The Program is open to Spanish students or students of any nationality who belong to the aforementioned groups or have the equivalent consideration in their respective countries.

Consult the program's scholarship policy



CEU



CEU SUPPORT
TO STUDENTS
WITH DISABILITIES

For more information

ceu.es

MADRID



91 514 04 02
sou@ceu.es
uspceu.com

BARCELONA



93 254 09 00
uapd@uao.es
uaoceu.com

VALENCIA



96 136 90 00 • Ext. 62367
uapd@uchceu.es
uchceu.es

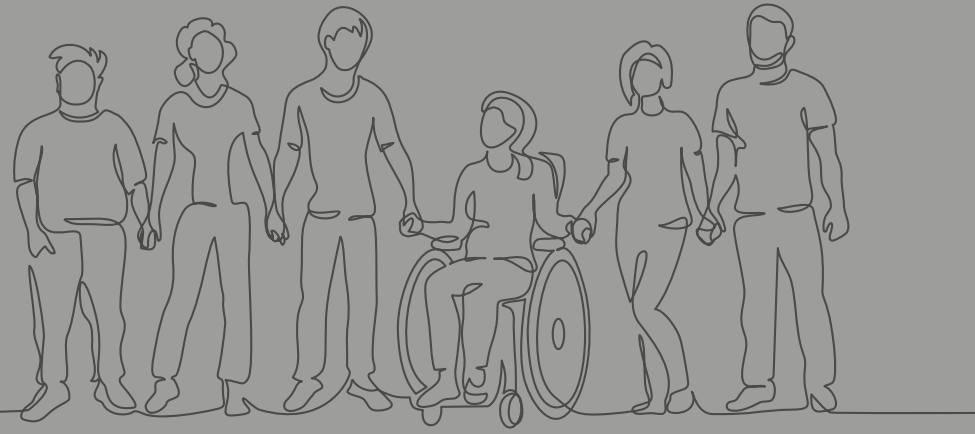
SEVILLE



954 48 80 00
info@ceuandalucia.es
ceuandalucia.es

COLLABORATING ENTITIES





Introduction

CEU Universities have always shown an unwavering commitment to provide careful attention to students with disabilities or specific needs. For this reason, our university guidance and disability services have always guaranteed that these students have access to the same opportunities than the rest of the students. This is a fundamental task, given the difficulties still existing in the standardization of university education for people with disabilities.

Now, in addition to the advice and attention that has been provided, CEU Universities have developed the **CEU Support Program for Students with Disabilities**, specifically designed to promote the integration of these students in CEU Universities, to ensure that disability does not hinder their academic careers and to help them specifically in their subsequent labor market insertion.

The principle on which this program is based is that of normalization, by virtue of which people with disabilities should be able to live an equal life, accessing the same places, areas, goods and services that are available to any person, i.e., having equal access to all the resources available to the university.

The program encourages students with disabilities to play an active role in their education, and is endorsed by Fundación Universitaria San Pablo CEU and its centers:

- Universidad CEU San Pablo (Madrid)
- Universidad CEU Cardenal Herrera (Valencia)
- Universitat Abat Oliba CEU (Barcelona)
- Centro de Estudios Universitarios CEU Cardenal Spínola (Seville)

CEU is the largest private educational institution in Spain, with more than 80 years of experience and 25 teaching centers. In addition, it stands out for its non-profit charitable-educational character, its educational orientation based on the principles of Christian Humanism and its commitment to academic excellence.



CEU Universities in the **Times Higher Education (THE)** rankings for 2022: in the **World University Ranking**, which evaluates the quality of university centers, 9th position among Spanish universities and 2nd place by number of citations (impact of publications), ranking among the top 600 universities in the world; in the **Young University Ranking**, for universities 50 years old or less, 4th place nationally and 2nd by number of citations, ranking in the global TOP 150; in the **Impact Ranking**, on the degree of compliance with the United Nations SDGs, in "Health and well-being", 4th place among Spanish universities and 1st among Spanish private universities, ranking in the global TOP 200.

Objectives

Expand our services and benefits to add value to the attention we have always provided to students with disabilities, characterized by:

- To promote the autonomy and full development of students with disabilities in their university studies.
- To promote a normalized and respectful social image of people with disabilities.
- To work towards access for students with disabilities to all University resources.

Features

- It has the most complete educational offer in Spain, with more than 150 degrees, divided into bachelor's, dual and bilingual degrees, more than 120 master's degrees and 7 doctoral programs.
- Personalized advice for the design of a tailor-made academic itinerary. For this purpose, the students' preferences and qualities, as well as his/her stage of life, will be taken into account from the beginning of his/her studies.
- Psychopedagogical support (specific study methodology, coping with exam situations, etc.) during the course of studies.
- Assignment of an academic tutor in 1st and 2nd year and a mentor in 3rd and 4th year related to the student's degree.
- Adaptations of access to the curriculum. With personal, material, and communication support to facilitate access to training.
- Adaptation of the study post at the University. By means of the necessary technical resources to guarantee accessibility.
- Adaptation of the internship calendar during the academic year when its typology allows it.
- Classroom training, with the possibility of online reinforcement to guarantee the continuity of university studies.
- Specific advice from the service of Professional careers in their labor market insertion.

